

# RESTORATION OF OFFERTORY BAGS

**AINA ĀBOLNIECE - ĀBOLIŅA**  
Master restorer of textile  
ainaaa2@inbox.lv  
The Scientific Restoration Department of Rundāle Palace Museum

**LĪGA PAUŠUS**  
Restorer / Specialist  
Trainee from the Riga Building College Restoration department

## ABOUT

They are cylindrical leather containers attached to a silvered brass band with a silvered handle sleeve soldered to it. The bag's exterior is made of dark red velvet. The underside of the bags is sewn on separately. The seams on the top and lower parts of the cup are covered with brocade galloons. When disassembled, velvet, linen and leather circles are revealed at the bottom. The circles are attached to an iron band covered with a leather strip. A dense brocade lace complements the galloon. Embroidery on velvet: with silk, cotton and brocade threads, a sailor at sea and plant themes creating a symmetrical composition.

OWNER: Rundāle Palace Museum, RPM 1721, RPM 1723

DATE: 18th c.

AUTHOR: unknown.

MATERIAL: leather, velvet, linen, silvered brass, turned wood, iron band, paper, pearls, flitters; brocade, silk and cotton thread used for embroidery.

TECHNIQUE: stitching, embroidery, turning, silvered metal details

Offertory bag or collection bag (Lv., upurmaks, ziedojumu trauks; De., Klingelboutel). In churches they were used to collect donations at the end of service. The donations were used to support the church and the congregation. Offertory bag RPM 1721, height 22 cm; Ø – 14 cm; length of the handle 162,5 cm, ANNO: HP: 1799; (possible year of creation) sewn with brocade threads, the ship flag has the year 1861 embroidered on it (possibly for an event).

RPM 1723, height 24,5 cm, Ø – 13.5 cm, length of wood handle 170 cm, ANNO 1748 (possible year of creation) The words STUMBER x VALTIN + are embroidered in a circular composition on the underside of the offertory bag.



## OFFERTORY BAG RPM1723



After restoration.



Before restoration.



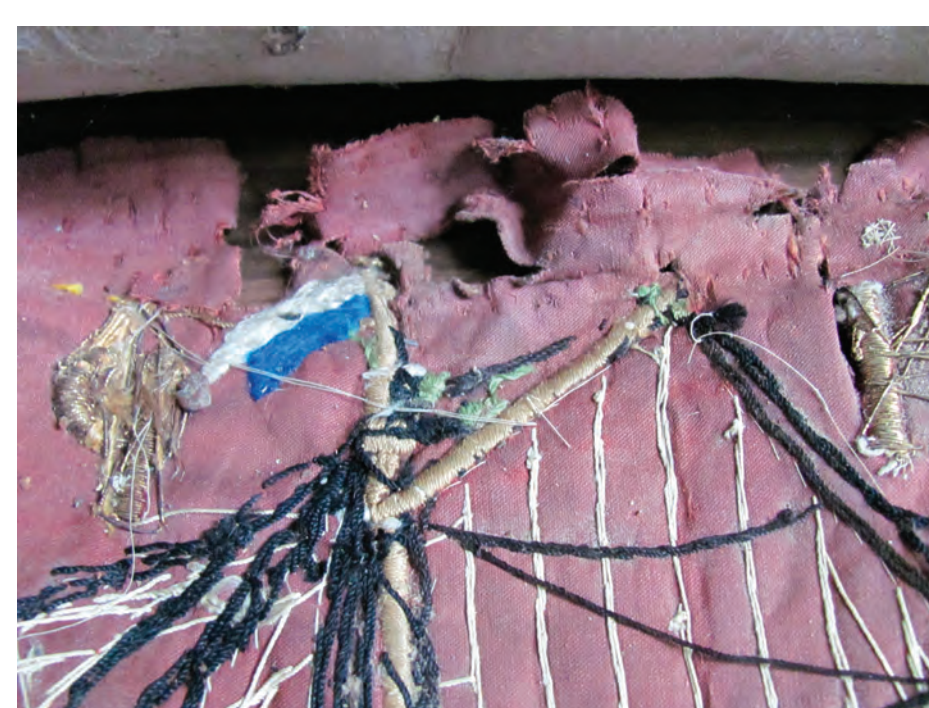
After restoration.



Before restoration.



Back side of the velvet embroidery.



Back side of the velvet embroidery.



Back side of the velvet embroidery after restoration.

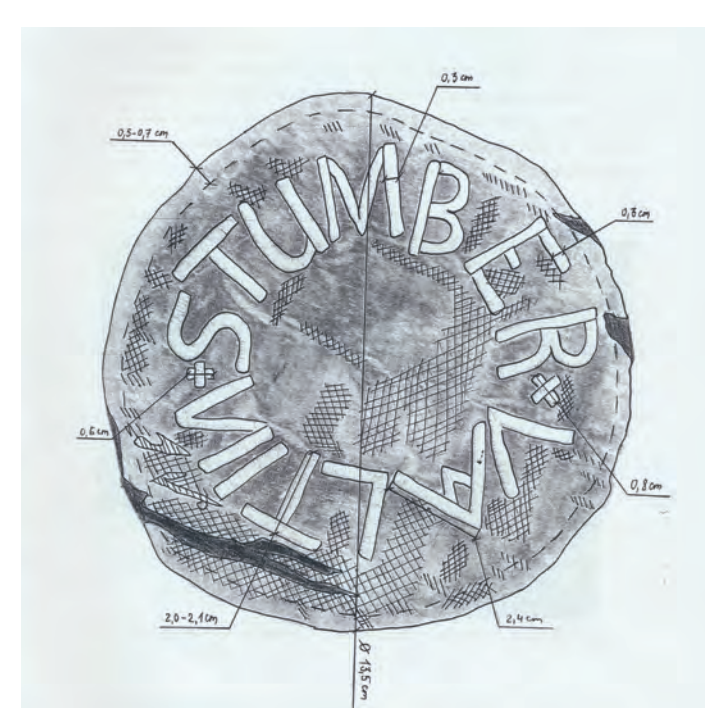


Underside of the offertory bag before restoration.

## OFFERTORY BAG RPM1721



After restoration.



The scheme of offertory bag.



Before restoration.



The bottom of offertory bag after restoration.



Before restoration.



Brocade galloon underside after restoration.



Brocade galloon top side after restoration.



Brocade galloon before restoration.



Velvet embroidery after restoration.



Velvet embroidery before.

## DAMAGES

Hardened and cracked leather, loss of leather in some places; oxidised brass bands; iron bands covered in corrosion, torn brocade galloons; lost and torn silk threads; torn velvet; over time, waste has accumulated at the bottom.

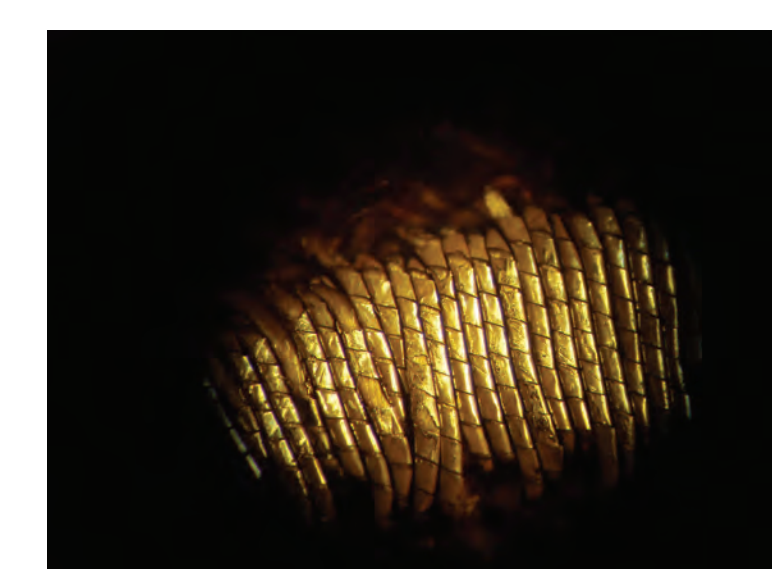
## THE PROCESS OF RESTORATION

Examination of exhibits, detection of damages before restoration; the offertory bags are disassembled – brass and iron bands are taken off, seams are unstitched, iron bands are taken off, velvet fabric is taken off the leather case; the fabrics are washed on the vacuum table using distilled water and the detergent "Kastanis";

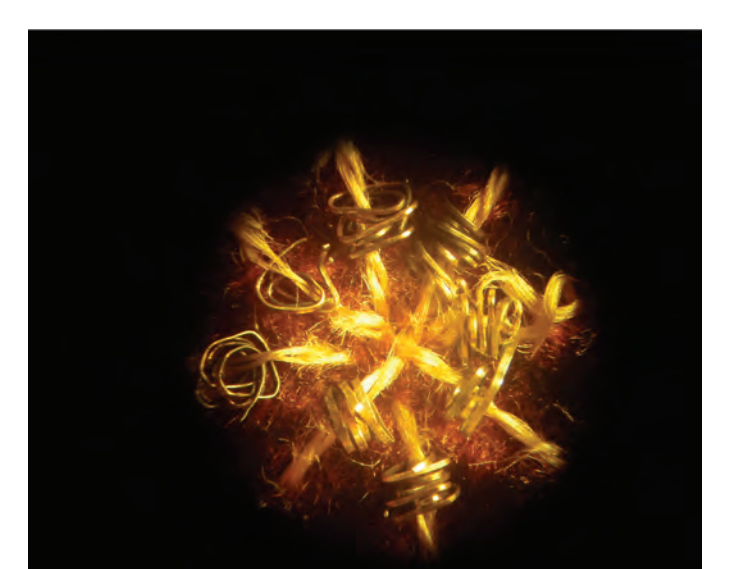
Lining fabrics are dyed with plant dyes, velvet fabrics are lined; brocade galloons are cleaned with an aqueous solution of 5 % sodium hexametaphosphate and detergent paste, then rinsed in distilled water; brocade and silk embroidery threads are secured;

Brass bands are cleaned with the detergent "Kastanis", then put in a 15% aqueous solution of hexametaphosphate; oxidation products are removed from surfaces; bands are rinsed off, dried and covered with B72 paraloid varnish; iron bands are cleaned mechanically, covered with tannin + 7% B72 paraloid varnish;

The leather case is cleaned with a leather detergent/softener (contents: distilled H<sub>2</sub>O, isopropyl alcohol, glycerol, lanolin); wooden handles are cleaned using cotton swabs soaked in ethyl alcohol, afterwards the surfaces are covered with microcrystalline wax; Both offertory bags are assembled.



Microscopic analysis of the offertory bag RPM1721 - Metal strip.



Microscopic analysis of the offertory bag RPM1721 - Eight - pointed.